

Oscillating Diaphragm *Pumps*

Oscillating diaphragm pumps are self-priming, corrosion resistant, have no dynamic seals and are constructed from FDA accepted materials.

Typical applications include detergent dispensing, chemical mixing, dish and glass washers, ice machines, analytical instruments, medical and laboratory instruments, and chiller applications.

These pumps are intended for replenishing, transfer and circulating installations.



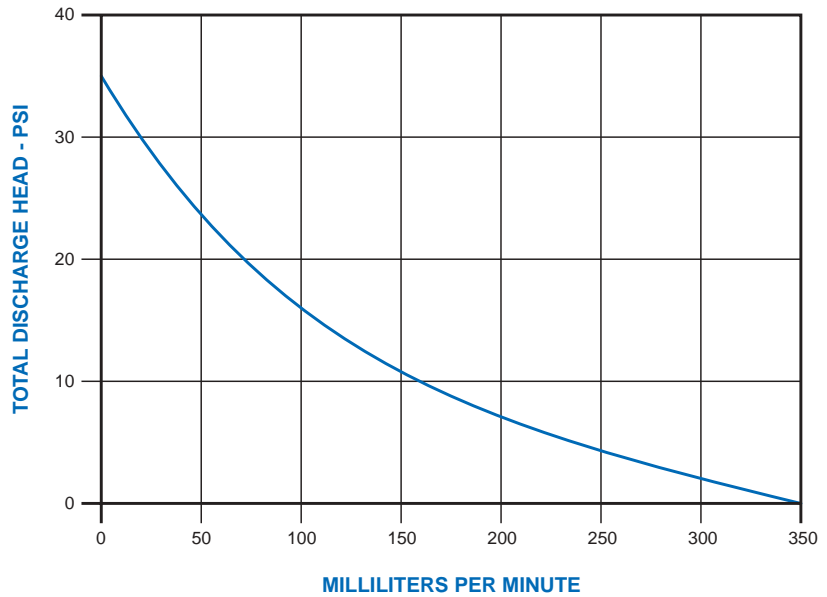
Features:

- Self-priming
- No dynamic seals
- Compact
- Lightweight
- Economical
- Can operate continuously
- Moisture & corrosion resistant coil
- Unique duckbill / umbrella valve, no external sealing, less room for failure

Oscillating Diaphragm Pump Operation:

An elastomeric diaphragm is attached to an armature assembly, which extends into an electric coil. A diode in the circuit feeds DC impulses to the electrical coil 60 times per second.

Each pulse draws the armature and diaphragm toward the pump head discharging liquid through the duckbill portion of a combination valve and out the discharge port. The springs then return the armature and diaphragm pulling liquid in past the umbrella portion of the valve from the inlet of the pump. Each portion of the combination valve presents back flow as the diaphragm movement provides the positive displacement.



Pump Specifications:

Flow Rates — To 350 ml/min. Actual flow may be higher and may vary from pump to pump. Due to this inherent characteristic, these pumps are not normally intended for metering.

Discharge Head — To 35 psi

Self-Priming — To 5 feet (1.5 m)

Fluid Temperature — To 104°F (40°C), higher temperatures with intermediate continuous duty.

Weight — Approximately 1 lb.

Coils — For AC, requires diode (included with listed models).
115V, 50/60 Hz
230V, 50/60 Hz

Agency Approvals — FDA listed materials for models listed in chart.

Materials in Contact with Solution:

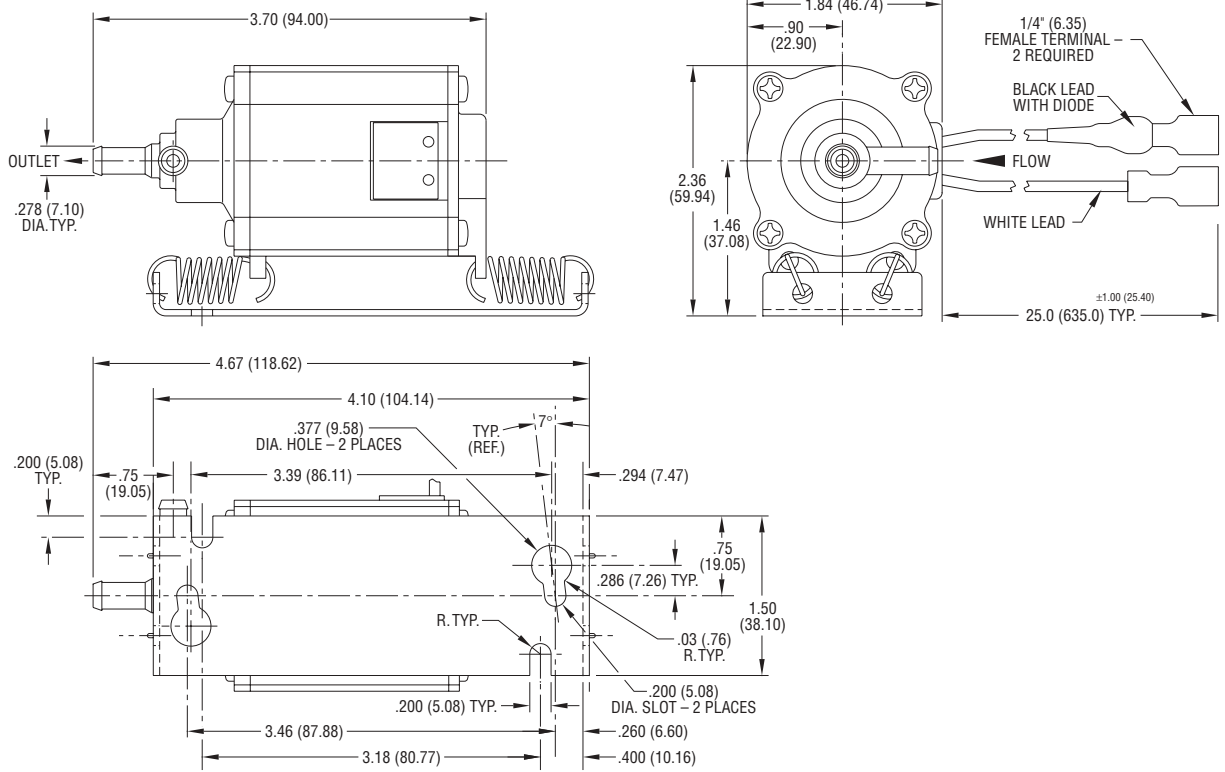
Silicone & EPT.

Refer to the Chemical Resistance Section to help determine compatibility. (Use only elastomers with "A" rating.)

MODEL SPECIFICATIONS											
Model Number	Diaphragm Material	Valve Material	Hose Connection		Volts	Hz	Amps	Watts	Electrical Leads & Terminals	Typical Curve Continuous Duty	Mount/ Bracket
			Inlet	Outlet							
17300-001	EPT/EPDM	Silicone	¼" Straight		115	50/60	.38	23	24" Black/24" White ¼" Female Spade	A	4 Springs & Bracket
17300-002	EPT/EPDM	Silicone	¼" Straight		230	50/60	.21	26	24" Brown/24" Light Blue ¼" Female Spade	A	4 Springs & Bracket

OSCILLATING DIAPHRAGM PUMPS - TYPICAL DIMENSIONS

Spring Mounted Model



Dimensions in Inches
(Dimensions in Millimeters)